

HCL

LANSterm Series



LANSterm -800 E Async Port 8 (RS-232) & LANSterm-1600 E Async port 16 (RS-232)

Cost-effective Connectivity

The LANSterm offers an economical method of connecting up to 16 Serial Devices, Character Terminals, Printers, Modems, and other Serial Devices to TCP/IP Ethernet LANs.

LANSterm models extend the Corporate Network to include local and remote users. It is a cost-effective solution for organizations requiring terminal connectivity.

LANSterm provides a comprehensive set of security features such as support for RADIUS to get the users authenticated from a central location.

The LANSterm supports SLIP, PPP and MLPPP enabling remote users to dial into the network.

LANSterm can be used as stand alone or as a rack-mountable unit with 8 & 16 RS-232 ports, each capable of 460Kbps. Multiple Telnet or Rlogin sessions support is incorporated for port access to Unix host systems. LANSterm is compatible with Windows (95/98/NT 4.0/2000), Linux, Unix Dialup networking.

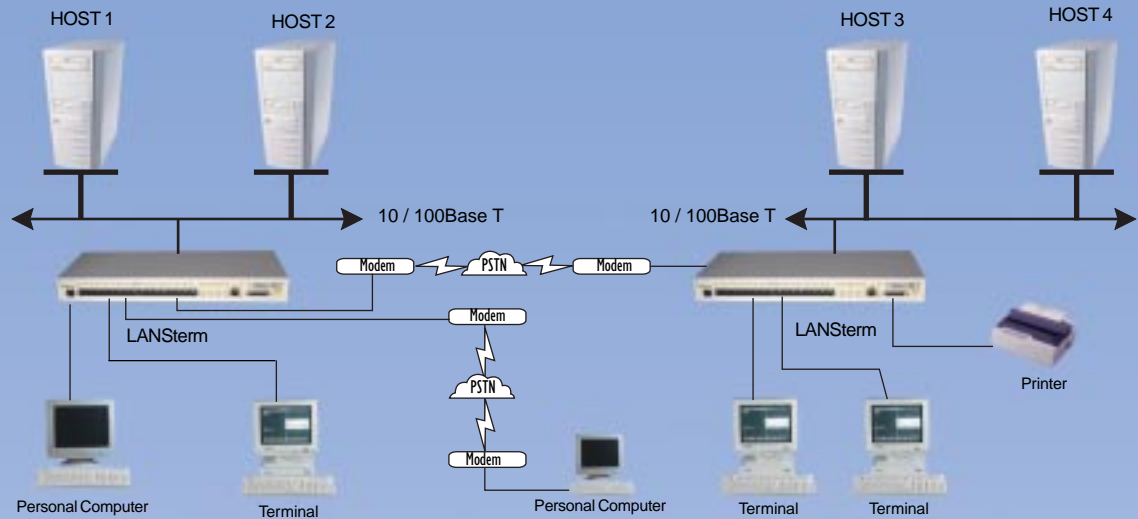
Application Areas

- UNIX Connectivity
- E-mails and Exchange Servers
- File Transfer Support
- Network Management
- Back End Office Connectivity
- Inter Office Connectivity
- Remote Printing
- Remote Management
- Data Base Mining

Industries

- Real Estates
- Manufacturing
- Telecom
- Corporates
- Financial/Banking Firms
- Inter Stock Exchange
- Hospitals
- Insurance Companies
- Ware Houses
- Service Business

TECHNICAL SPECIFICATION



NETWORK PROTOCOLS

TCP/IP, UDP, ICMP, RWHOD, SNMP, ARP, Proxy ARP, DHCP, RIP, MLPPP, SLIP, CSLIP, TELNET, RLOGIN, PPP (PAP/CHAP), Direct Sock, CCP, Dial On Demand, Bandwidth On Demand, RADIUS

NETWORK PORT FIXED PORT SERVER

10/100 Mbps Fast Ethernet (RJ45)

Sophisticated serial port emulation program, which gives TTY control over LANStem ports. Drivers supplied for SCO OS, SCO UnixWare, IBM AIX, HP-UX, SUN-Solaris, Solaris (Intel), Linux, NCR Unix, SVR4.2, Magnix, Digital UNIX

SERIAL PROTOCOL

RS-232 (8/16 Ports)

MAX. BAUD RATE

Async port max speed- 460K baud

PARALLEL PORT

One Centronics Port

HOST INTERFACE

10/100Mbps Fast Ethernet Port, (Optional Thinet & AUI Ports)

HARDWARE

50MHz RISC processor, 128KB NVRAM, 1MB flash, 16MB DRAM, Y2K RTC

CONNECTOR TYPE

Serial port

RJ45

Parallel port

DB25 Female

LINE VOLTAGE

90-264V

POWER CONSUMPTION

20 Watts (max.)

DIMENSION

442* 201* 48 (L x W x H)mm

ROUTING

Supports DNS, WINS, RIP and STATIC routing

UPGRADE

FLASH update using TFTP via the network

LOCAL MANAGEMENT

Using SNMP, Telnet/Rlogin, Local Console

HCL PERIPHERALS

(A Unit of HCL Infosystems Ltd.,)

299, Arcot Road, Vadapalani,

Chennai-600 026.

Ph: 4800156/4843566/4845245

E-Mail: mktg_info@hclp.com

URL: <http://www.hclperipherals.com>

Contact us

Chennai: Ph: 2342815/2342816/2340165 Mobile: 98401 39847 Fax: 2340161
E-Mail: mktg_chn@hclp.com **Coimbatore:** Ph: 214933/200375 Mobile: 98422 36860
E-Mail: mktg_coim@hclp.com **Pondicherry:** Ph: 248284/249281 **Bangalore:**
Ph: 6762708 Fax: 6765652 Mobile: 98450 00413 E-Mail: mktgblr@hclp.com **Mumbai:**
Ph: 2815471/2815472 Mobile: 98204 56196 E-Mail: mktg_bom@hclp.com **Kolkata:**
Ph: 4632285 Mobile: 98311 88331 E-Mail: mktg_kol@hclp.com **Delhi:** Ph: 6293957/
6286715/6222209 Mobile: 98681 50599 E-Mail: mktg_del@hclp.com **Hyderabad:**
Ph: 7902912/6215912 Mobile: 98480 22078 E-Mail: mktg_hyd@hclp.com